



INSTALLATION INSTRUCTIONS

NEW in 2023 – mSnow tile upgrades!

“Standoff washers” added to bottom of tile = **increased water drainage** under the mSnow in summer to minimize staining and ease the labor of power washing & **minimized assembly labor** from standoff height of 1/16” along seam lines.

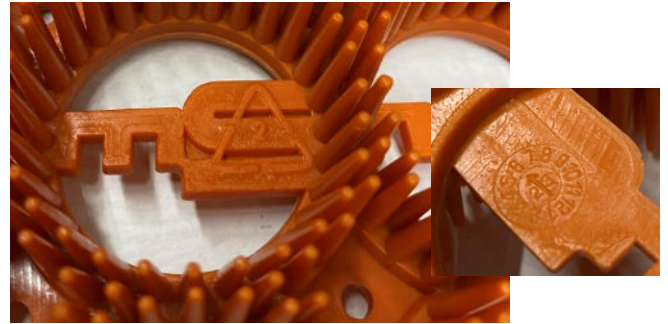


Improved locking tabs keep 6-packs together in packaging and during installation. *Can be pulled apart and reinstalled together if necessary.*



Added RECYCLE logo to remind users that mSnow is made from recycled materials and is fully recyclable when done

using. *NOTE: A date stamp was added to the underside of the tile for future reference on the date of manufacture.*



PRO TIPS for Chairlift Ramps

During installation, mSnow may be cut in a number of ways (by qualified professionals only). For ripping numerous tiles, a table saw or band saw with a fine tooth blade set to 3/8” tall and rip fence does wonders to speed up cutting. *OR a simple side cutter or wire cutter can be used to quickly nip the webs apart with no plastic saw dust mess.*

During use, chairlift operators should always monitor ramp conditions to ensure skiers are able to safely load and unload the lift! The mSnow should be **regularly cleared of excess snow down to the bristle height** to ensure a level ramp surface. If the mSnow-covered ramp is totally free of snow, **add snow to fill voids**. This will help to lubricate the surface for the skiers and snowboarders.



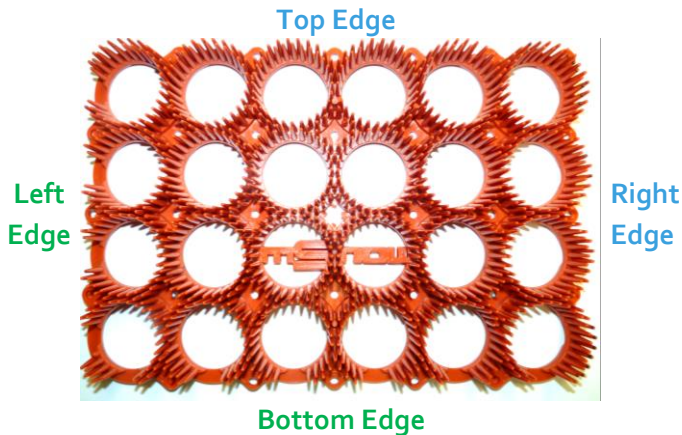
Questions? Call support @ 414.397.1233 or email us: answers@mSnow.ski



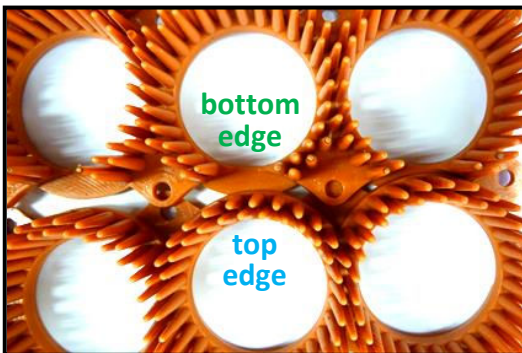
INSTALLATION INSTRUCTIONS

What's in the box:

- ① mSnow Tiles – 1 “tile” shown below:



- ① Each tile is 7” by 10.25” or about 1/2 sq ft, so 2 tiles = 1 ft² of mSnow.
- ② Notice the orientation of the mSnow logo on each tile - these should all face the same direction.
- ③ Also notice that the **left** and **bottom** edges of the tile look different than the **top** and **right** edges – this is so the tiles will tongue and groove together. A **top edge** will link to a **bottom edge** and a **right edge** will link to a **left edge**.

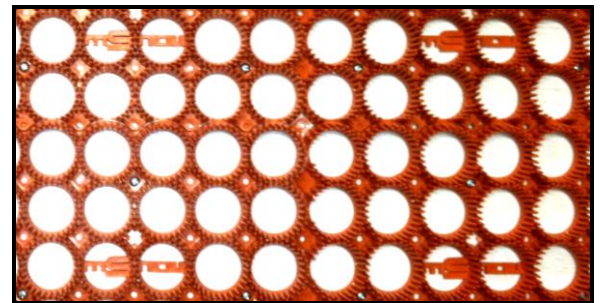


Things you'll need:

- ① mSnow tiles
- ② Wooden Surface(s)
- ③ Battery-Powered Screw Gun
- ④ Magnetic Bit (available through us)
- ⑤ mScrews (#8 x 1/2” to 3/4” long)
 - ① Found at local hardware store or purchased through mSnow
 - ② You need at a **MINIMUM** 3 screws per tile – see Screw Hole Guides

Installation Steps:

- ① Construct your ramp layout using plywood (or similar).
- ② Lay out mSnow tiles on top of wooden structure in desired configuration by tongue-and-groove-ing (yes that's a word... well, it is now anyway!) tiles together.
- ③ The mSnow logo should face the same direction on each tile as shown:



Continued on Page 2...

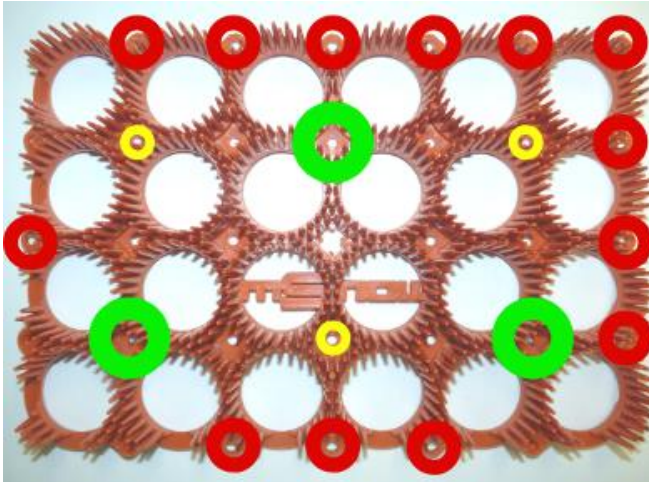




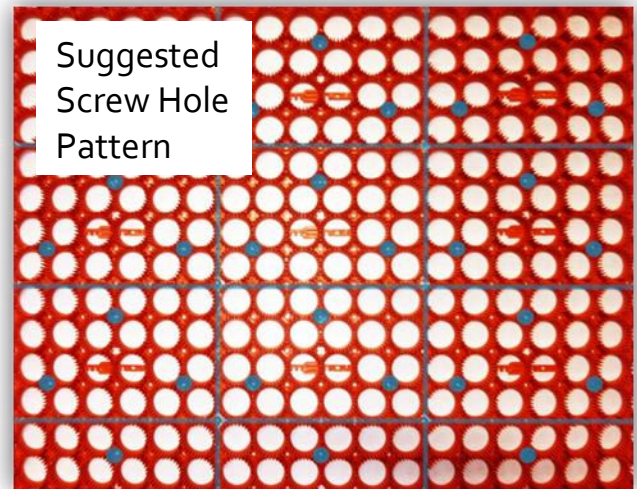
INSTALLATION INSTRUCTIONS

...Continued from Page 1

- ⑤ Screw tiles to wooden structure using the following Screw Hole Guide and Suggested Screw Hole Pattern:



- Primary screw holes – usually used
- Secondary screw holes – use around edges
- Edge screw holes – not usually used



- Do not screw tiles together, only screw tiles to wooden structure – this allows expansion and contraction of tiles during temperature changes.
- Once your structure is completely tiled with mSnow, add screws to the inside outer edges of the mSnow area (not the very outside edges) to keep them from warping:



Questions? Call support @ 414.397.1233 or email us: answers@mSnow.ski



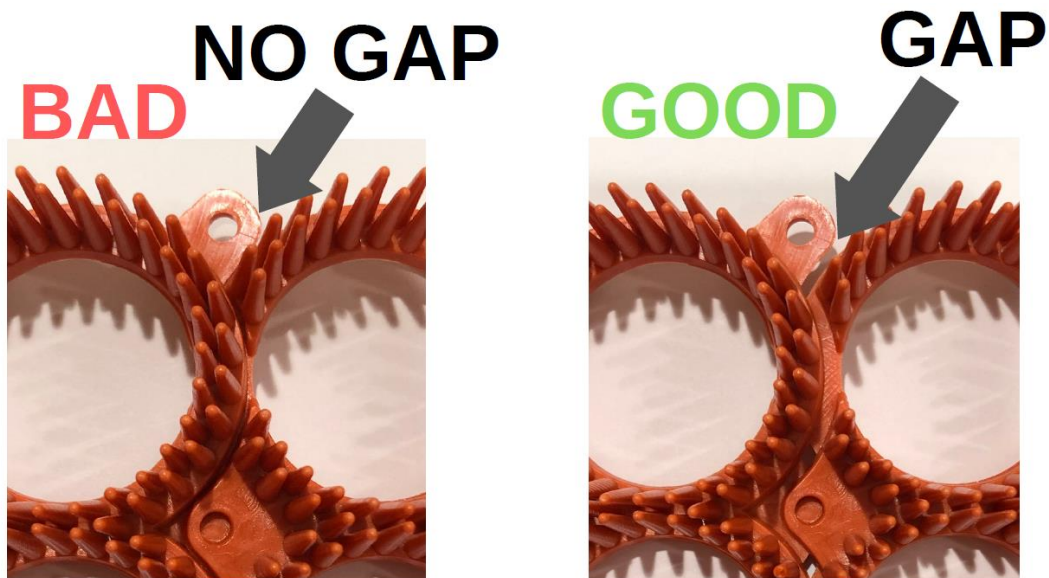
INSTALLATION INSTRUCTIONS

IMPORTANT!

THERMAL EXPANSION NOTE:

mSnow is a plastic product that expands and contracts with varying temperatures.

When installing *especially* in temperatures below 65 degrees Fahrenheit, mSnow tiles **MUST NOT** be pushed together. Click the tiles together in the desired pattern, but make sure they are not pushed tightly together when installing screws. Also, do not run screws through the “shared” holes as this will lock the tiles together. Either of these mistakes will cause the tiles to buckle in the hot summer months.



Questions? Call support @ 414.397.1233 or email us: answers@mSnow.ski