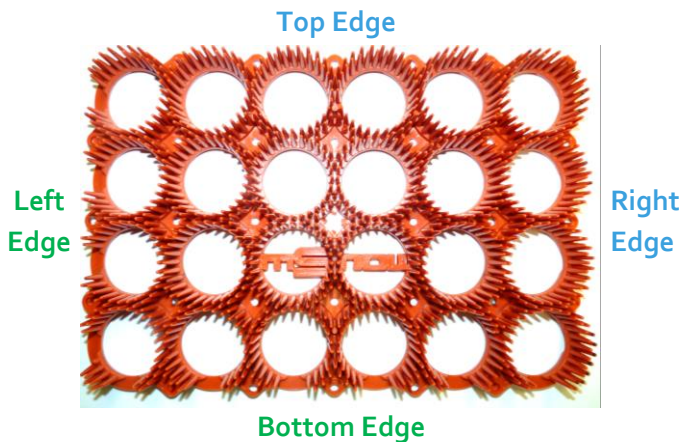




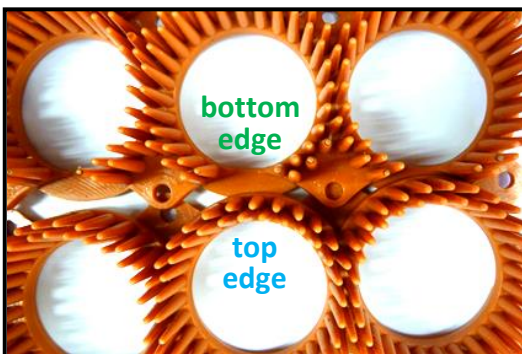
INSTALLATION INSTRUCTIONS

What's in the box:

- ① mSnow Tiles – 1 “tile” shown below:



- Each tile is 7" by 10.25" or about 1/2 sq ft, so 2 tiles = 1 ft² of mSnow.
- Notice the orientation of the mSnow logo on each tile - these should all face the same direction.
- Also notice that the **left** and **bottom** edges of the tile look different than the **top** and **right** edges – this is so the tiles will tongue and groove together. A **top edge** will link to a **bottom edge** and a **right edge** will link to a **left edge**.

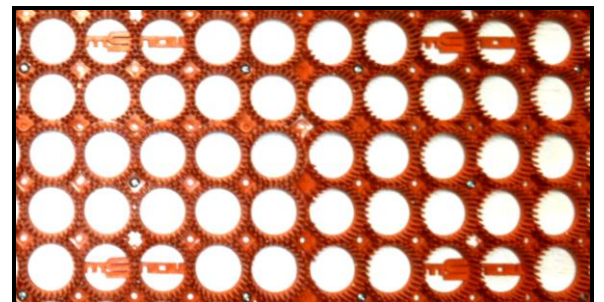


Things you'll need:

- ① mSnow tiles
- ② Wooden Surface(s)
- ③ Battery-Powered Screw Gun
- ④ Magnetic Bit (available through us)
- ⑤ mScrews (#8 x 1/2" to 3/4" long)
 - Found at local hardware store or purchased through mSnow
 - You need at a **MINIMUM** 3 screws per tile – see Screw Hole Guides

Installation Steps:

- ① Construct your mSnow ramp layout using plywood (or similar).
- ② If using outdoor carpet, lay down on top of wooden structure.
- ③ Lay out mSnow tiles on top of wooden structure (or carpet) in desired configuration by tongue-and-groove-ing (yes that's a word... well, it is now anyway!) tiles together.
- ④ The mSnow logo should face the same direction on each tile as shown:



Continued on Page 2...



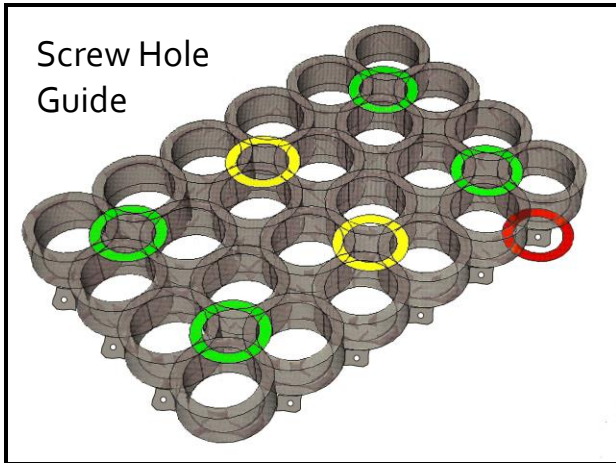
Questions? Call support @ 414.397.1233 or email us: answers@mSnow.ski
www.mSnow.ski ∞ Instagram @shred_mSnow



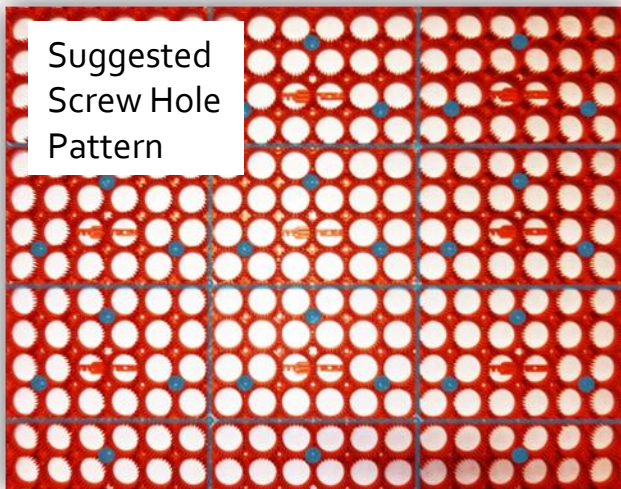
INSTALLATION INSTRUCTIONS

...Continued from Page 1

- ⑤ Screw tiles to wooden structure using the following Screw Hole Guide and Suggested Screw Hole Pattern:

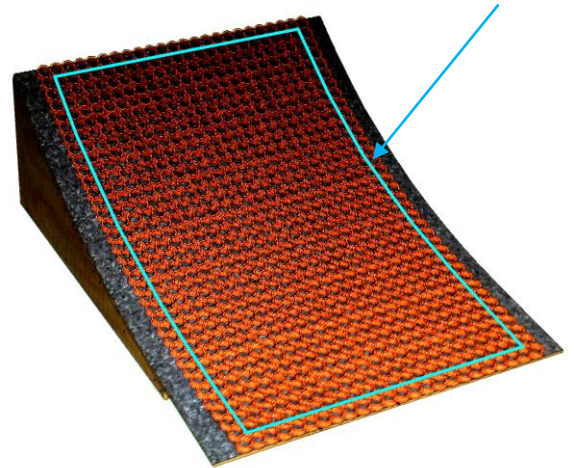


- Primary screw holes – usually used
- Secondary screw holes – use as needed
- Edge screw holes – not usually used



- Do not screw tiles together, only screw tiles to wooden structure – this allows expansion and contraction of tiles during temperature changes.

- Once your structure is completely tiled with mSnow, add screws to the inside outer edges of the mSnow area (not the very outside edges) to keep them from warping:



Tips & Tricks:

- ① Magnetic bit will help you avoid losing screws. Without one, it is likely you will lose EVERY screw (seriously).
- ② Avoid installing in cold temperatures
- ③ Sandwich outdoor carpet between wooden structure and mSnow for smoother riding
- ④ Use more or less screws as needed



- ⑤ Put mWax on your ride before testing out your mSnow setup to give you the perfect glide across the bristles (different than regular wax!!)



Questions? Call support @ 414.397.1233 or email us: answers@mSnow.ski
www.mSnow.ski ∞ Instagram @shred_mSnow



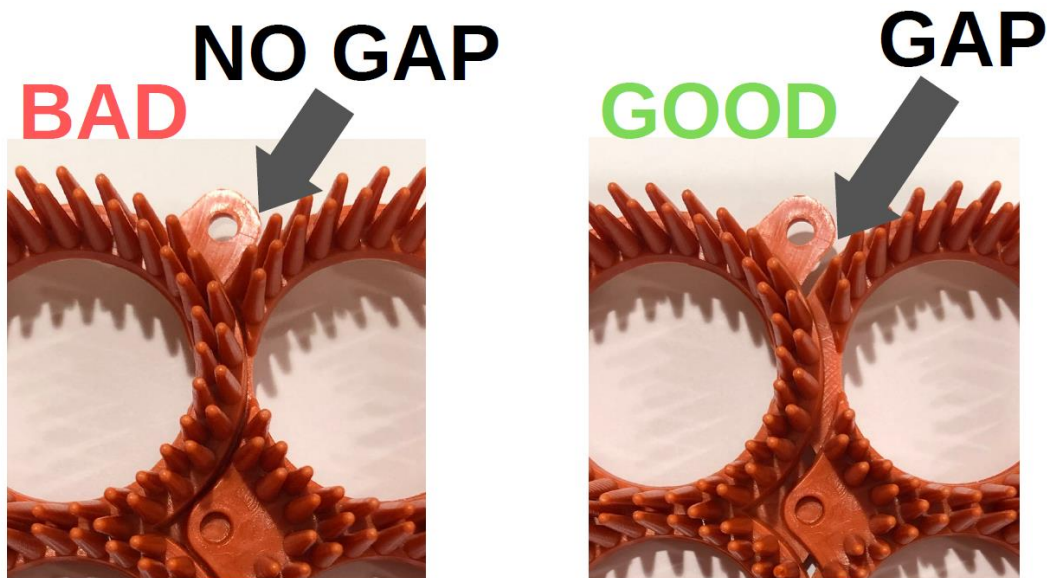
INSTALLATION INSTRUCTIONS

IMPORTANT!

THERMAL EXPANSION NOTE:

mSnow is a plastic product that expands and contracts with varying temperatures.

When installing *especially* in temperatures below 65 degrees Fahrenheit, mSnow tiles **MUST NOT** be pushed together. Click the tiles together in the desired pattern, but make sure they are not pushed tightly together when installing screws. Also, do not run screws through the “shared” holes as this will lock the tiles together. Either of these mistakes will cause the tiles to buckle in the hot summer months.



Questions? Call support @ 414.397.1233 or email us: answers@mSnow.ski
www.mSnow.ski ∞ Instagram @shred_mSnow